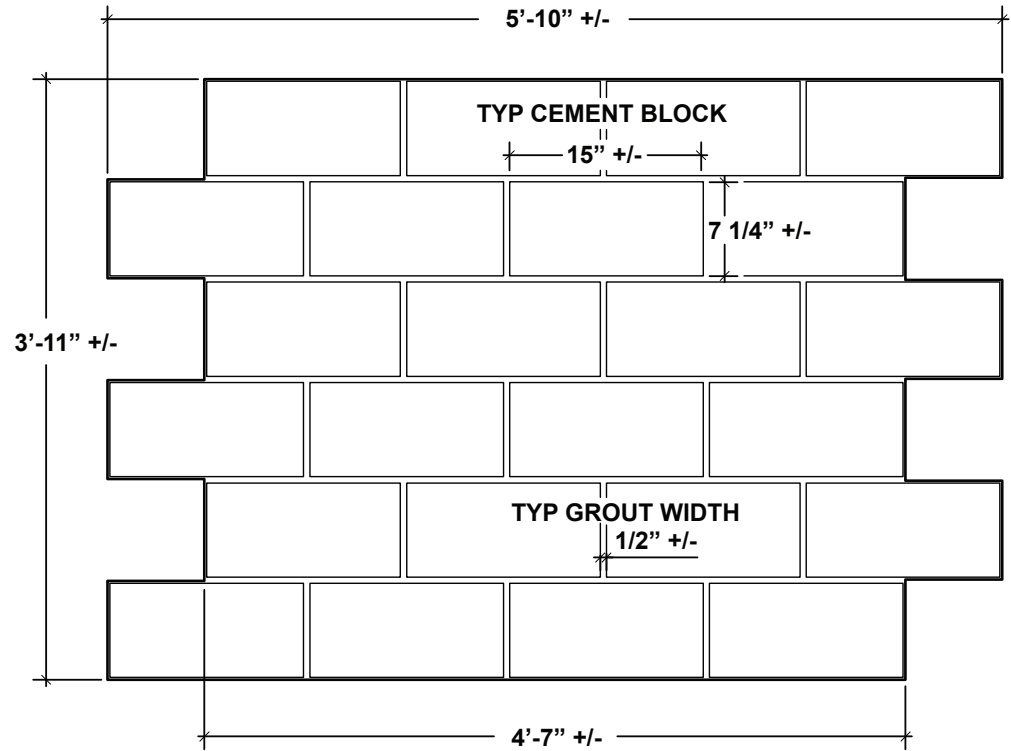


PAS 005 - "RECAST" CEMENT BLOCK - installation instructions



Pulp Art Surfaces Wall Skins consist of the following raw materials:

- 99.9% Recycled Newsprint, OCC (Old Corrugated Box) and other recycled ground woods.
- < .01% Total of listed below:
 - Dry Alum - to adjust pH levels
 - Wet strength additive - increase strength
 - Sizing Agents - bonds Fiber, moderate water resistance, does not make them water proof.
 - Biocide - kills germs and bacteria

All of our products are 100% recyclable, and free of cadmium, lead, mercury and hexavalent chromium.

Pulp Art Surfaces Wall Skins have a Class "B" fire rating.

The fire rating can be improved by adding fire retardent to the paint mixture.

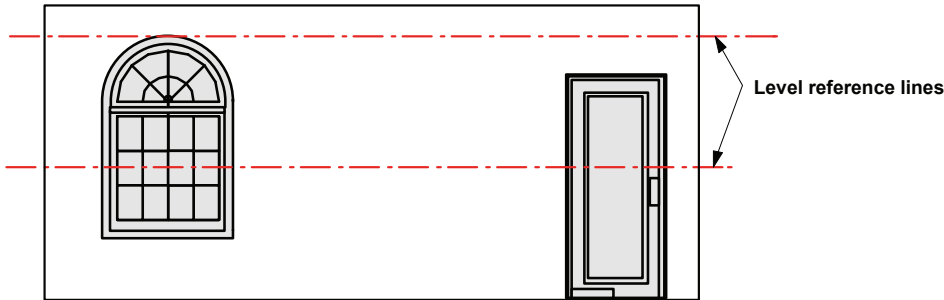


Pulp Art Surfaces, LLC www.pulpartsurfaces.com

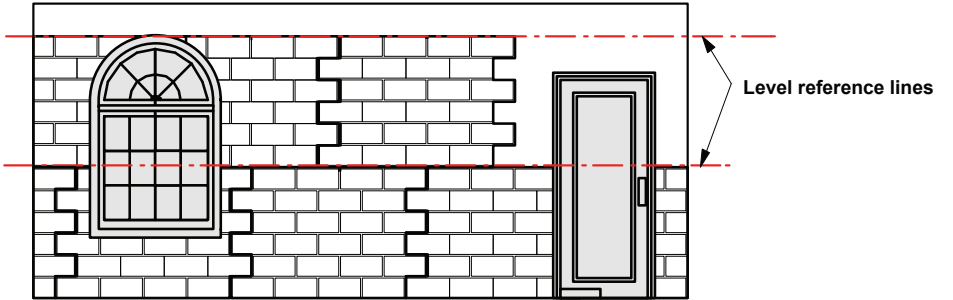
4024 Radford Ave, Mill # M1 Studio City, CA 91604 818 655-5804 888 654-9325 F

PAS 005 - "RECAST" CEMENT BLOCK - installation instructions

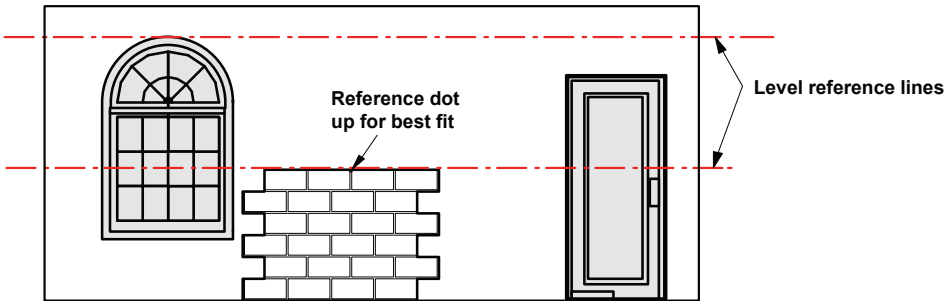
1. Snap level lines on wall to be covered for reference.



4. Install remaining rows by staggering sheets over lower seams while holding to the level lines. Cut around doors and windows as required



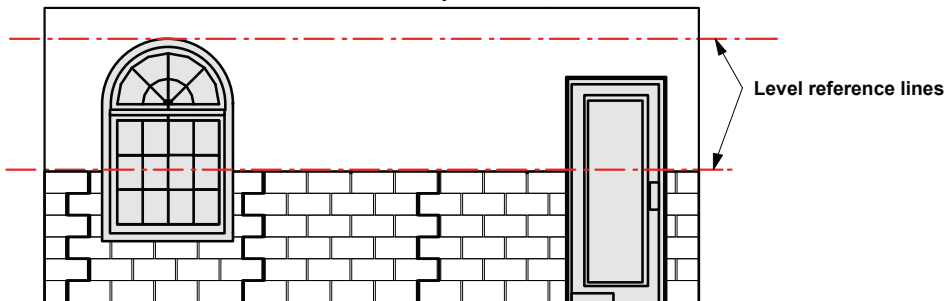
2. Loosely position first skin while holding to level line. Attach as required with screws or staple flat to wall.



5. Screw / staple entire wall so sheets are flat. Caulk or "point up" to match existing grout line depth and texture. When dry, paint, texture and age as desired.



3. Loosely position remaining row, matching the level lines. Cut sheets with a razor knife or saw. Trim perimeter as needed. Outside corners can be mitered or plastered, then sanded.



General Notes:

Pulp Art Surfaces products can be trimmed easily with a razor knife. Similar to drywall, score firmly 2 times, bend and snap apart.

When positioning sheets, keep them level as well as keep the grout line space equal.

Staple or screw at 12" minimum to keep material flat on wall. Countersink fasteners in grout lines and patch over. Use construction adhesive if desired.

Pulp Art Surfaces products can be painted and plastered with any product. The surface has natural adhesion so we recommend water based low VOC products to protect our planet



Pulp Art Surfaces, LLC www.pulpartsurfaces.com

4024 Radford Ave, Mill # M1 Studio City, CA 91604 818 655-5804 888 654-9325 F